

INSTALLATION INSTRUCTIONS for **XANDER INSERT** **WOOD BURNER**

• Clean Air Sub 1.0 • Non Clean Air (Rural)

MASONRY INSTALLATIONS

8th AUGUST 2023

- ❖ These instructions are for MASONRY installations only.
- ❖ For Built-In (ZC) installations, please refer to the separate instruction book.
- ❖ Tested as per Appendix E (Thermal Testing of Fireplace Insert Installations) of AS/NZS 2918:2001 and confirmed compliant with AS/NZS 2018:2001.
- ❖ Two fascia (panel set) options are covered in these instructions, “ORIGINAL” and “ALLURE”. The Original fascia set comprises an assembly of separate panels whereas the Allure is a single piece fascia.

SAFETY INFORMATION

General:

- This appliance is not intended for use by persons (including children) with reduced physical, sensory or mental capabilities, or lack of experience and knowledge, unless they have been given supervision or instruction concerning use of the appliance by a person responsible for their safety.
- For the protection of young children, install an effective fire safety screen around your fire. Always keep children well away from the wood burner when it is alight.
- Supervise young children to ensure they do not play with the appliance.
- During initial burns of the appliance, ventilate the rooms well. It is recommended that babies, small children, pregnant women and pets should not be present in the area during initial burns as this is the firebox paint curing period.
- Do not make any modifications to the unit and use it only in the manner described in the manual. Using it in any manner not recommended by the manufacturer may result in injury or death.

For units including electrical connections:

- If the wood burner is permanently connected to an electrical source, an isolating switch (wall switch) must be installed.
- New circuits or modifications, if required, but be made using the services of a certified electrician only.
- Ensure that the outlets you use are grounded properly, polarised and provided with fuse units.

- Ensure that the electrical plug is accessible after installation. The wood burner must not be located immediately below an electrical socket.
- Never operate the appliance with a damaged plug or cord, or if you observe the fan unit is malfunctioning or the heater has been damaged in any way. Call the authorised service person immediately for repairs or making electrical or mechanical adjustments. – Isolate the electrical supply in order to alleviate any potential risk.
- If the supply cord is damaged, the manufacturer, its service agent or a suitably qualified person must replace it to avoid electrical hazard. Any cord similar to the original can be used.

IMPORTANT INFORMATION

- I. **It is imperative that you familiarise yourself with this entire document, and ensure you have sufficient knowledge of relevant building regulations prior to proceeding with an installation.**
- II. **The appliance and flue system shall be installed in compliance with AS/NZS 2918:2001 and the appropriate requirements of the relevant building code or codes.**
- III. **Appliances installed in accordance with this standard shall comply with the requirements of AS/NZS 4013 where required by the regulatory authority i.e. the appliance shall be identifiable by a compliance plate with the marking “tested to AS/NZS 4013”**
- IV. **Any modification of the appliance that has not been approved in writing by the testing authority is considered to be in breach of the approval granted for compliance with AS/NZS 4013**
- V. **Mixing of appliance or flue system components from different sources or modifying the dimensional specification of components may result in hazardous conditions. Where such action is considered, the manufacturer should be consulted in the first instance.**
- VI. **Cracked and broken components e.g. glass panels or fire bricks, may render the installation unsafe.**

TESTED in compliance with AS/NZS 2918: 2001

- A. Yunca recommends that competent trades persons carry out all installations (e.g. NZHHA Registered Installer), to obtain maximum performance and safe, efficient heating.
- B. A consent is required. We suggest you check with local building inspectors as by-laws do vary from area to area. Also notify your Insurance Company that a solid fuel heater has been installed.

C. Floor Protector

- C1. Masonry installations: Floor protector (pre-cast concrete, or equivalent non-combustible material) must be installed so that its leading edge is a minimum of 350mm in front of the appliance base [with fascia attached]. **The floor protector must be a minimum of 860mm wide x 915mm deep x 50mm thick.**
- C2. If tiling the hearth, it's important to ensure the same finished height is maintained over the entire area including under the firebox, otherwise the fascia will not fit.
- C3. Front floor protector clearance may be reduced if appliance is elevated. (Table 2, Section N)

D. Seismic restraint.

- D1. Heater must be restrained from seismic movement (Fig. 8) as required by AS/NZS 2918:2001

E. Heat sensitive materials exclusion zone.

- E1. Non-combustible front cladding **must be used**, to a minimum of 1000mm from the top of the appliance hearth, and a minimum of 207mm for the Original Fascia set, 217mm for the Allure Fascia, either side of the outer casing of the firebox. (Fig. 5)
- E2. No heat-sensitive material is permitted to contact the fascia forming or surrounding the front of the installation.
- E3. Inside the cavity, no exposed combustible material is to be present.

F. Mantel Clearances.

- F1. Masonry installation must have a minimum of 1300mm from the underside of a combustible mantel shelf to the top of the appliance hearth. The mantel shelf must not protrude further than 150mm into the room. [This measurement is taken from the wall. Refer fig.6]

If the clearance to the mantel shelf is less than the minimum specified, a heat shield **must** be fitted to the underside of the mantelshelf using the relevant shielding detail as set out in AS/NZS 2918:2001.

- F2. **A 100mm Yunca heat deflector** must be installed directly above the fascia for the full width of the appliance if a combustible mantel key or shelf is present. [This is NOT to reduce clearances to the mantelshelf. To reduce clearances, refer to F1 (above)].
- F3. Mantel uprights must not protrude further than 70mm into the room, with the original fascia, or 85mm with the Allure fascia and be no closer than 30mm to the fascia on the side of the appliance where fans are (internally) hard wired. For units with external wiring through the side panel, the side clearance to mantel uprights should be a minimum of 50mm.

G. Xander Wood Burner Dimensions (Fig 1)

- ⇒ For Original fascia version, the blank top panel (without vent) must be used for Masonry Installations. (The vented fascia top panel is for zero clearance installations only).
- ⇒ For Allure Fascia there is no separate top panel, as it's all one single piece.

FASCIA DIMENSIONS (mm)		
	ORIGINAL	ALLURE
WIDTH (P)	980	1000
HEIGHT (Q)	678	627
THICKNESS (R)	35	50
DEFLECTOR HEIGHT (S)	35	50

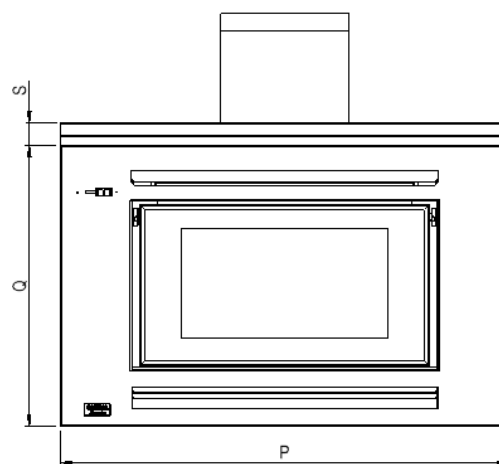
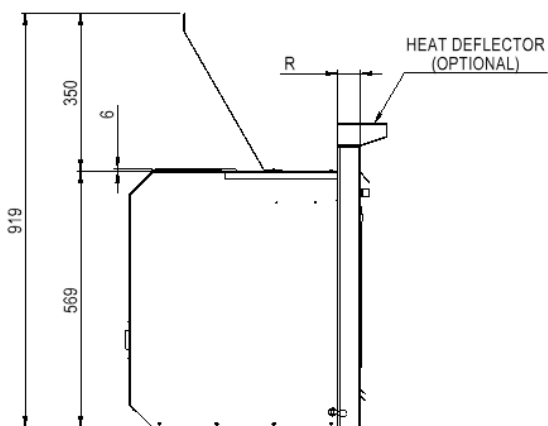
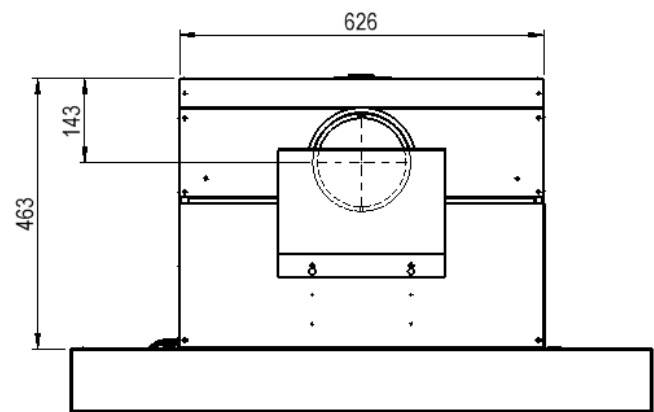


Fig 1

H. Cavity Dimensions

H1. Cavity should be prepared using the following clearances. (Table 1) & (Fig. 2)

- Ensure wiring for fan (Fig. 11, Fig. 12) is taken into account when preparing cavity.

MASONRY CAVITY MINIMUM DIMENSIONS (mm)		
WIDTH (W)	HEIGHT (H)	DEPTH (D)
680	600	530

Table 1

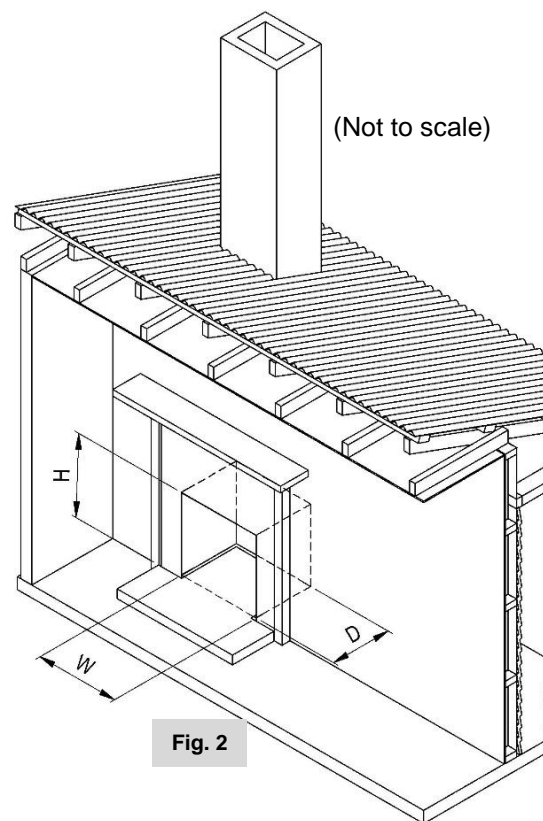


Fig. 2

I. Cavity Venting

11. As the unit is installed into a masonry chimney structure, **the Xander does not require additional venting**. Sufficient venting of at least 10,000mm² is provided by the double-skinned liner and vented cone/cowl of the flue kit.
12. If cavity venting is preferred, a 10,000mm² vent must be installed at least 600mm from the base of the enclosure. This can be any configuration as long as it equates to at least 10,000mm². [For example: 4 holes at 50 x 50mm or 1 hole at 100 x 100mm].
13. Similar vent(s) can also be added to the top of the masonry enclosure, however the venting already provided via the flue cone and liner will be sufficient without this.
14. Suitable precautions should be taken to prevent rodents and/or debris from entering or obscuring the air vents. If grilles are used; ensure the minimum vent area is maintained through the grille.

J. YUNCA Insert Flue Kit – Masonry (Complies with AS/NZS 2918:2001):

J1. Masonry Flue Kit consists of the following:

- 4.8m x 150mm stainless steel flue.
- 1.2m x 250mm galvanised liner.
- 1 x top cap & cowl (cone).

⇒ **Please Note:** All flue joints must be sealed with flue sealing compound. Use stainless steel screws or rivets to join the flue pipe (three equally spaced places at each joint). The first length of flue must be fixed to the flue spigot with at least one stainless steel screw or rivet. The required minimum flue termination height is 4.6 metres above the floor protector.

K. Typical Masonry Flue Installation (Fig. 3)
 Complies (with heater) to AS/NZS 2918:2001

(Not drawn to scale)

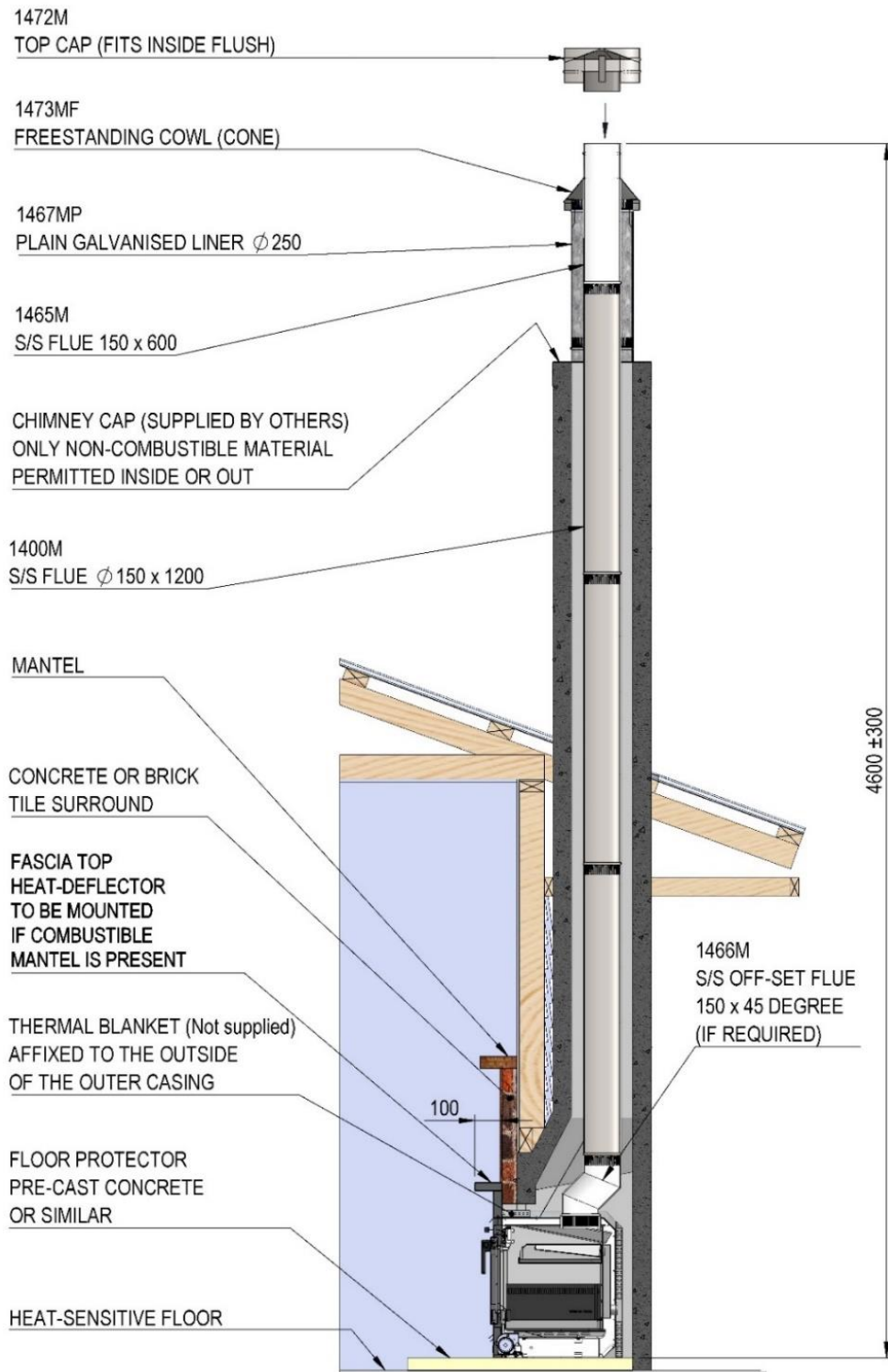


Fig. 3

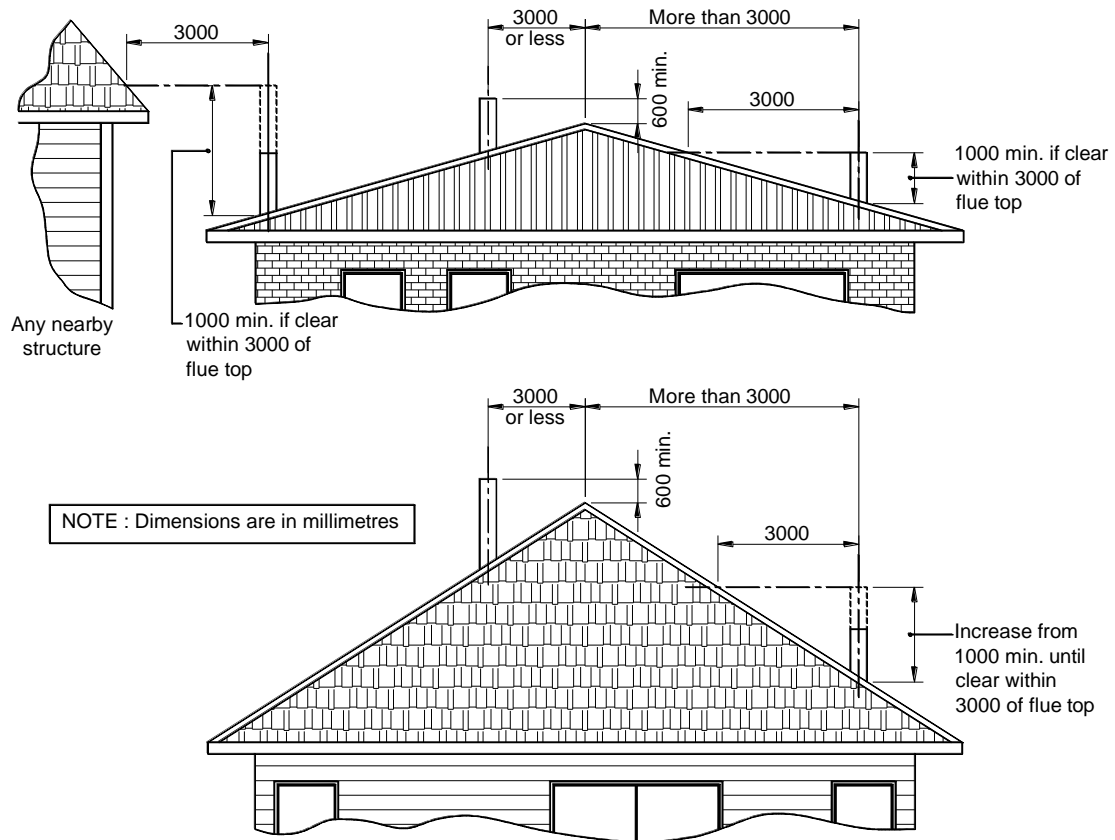
L. Conditions for Flues (Fig. 4)

L1. The FLUE shall extend to:

- Not less than 600mm above the highest point on the roof if within 3.0m of that point, **or**
- Not less than 1000mm above the intersection point with the roof and not lower than any point of the roof within 3.0m.
- In any case the length of the flue shall not be less than 4.6m from the ash floor protector.

L2. In some situations the Local Council may vary the above requirements.

L3. The flue system must comply with AS/NZS2918:2001.



MINIMUM HEIGHT OF FLUE SYSTEM EXIT

Fig. 4

M. Xander Masonry Installation Thermal Clearances

➤ THERMAL CLEARANCES FRONT VIEW

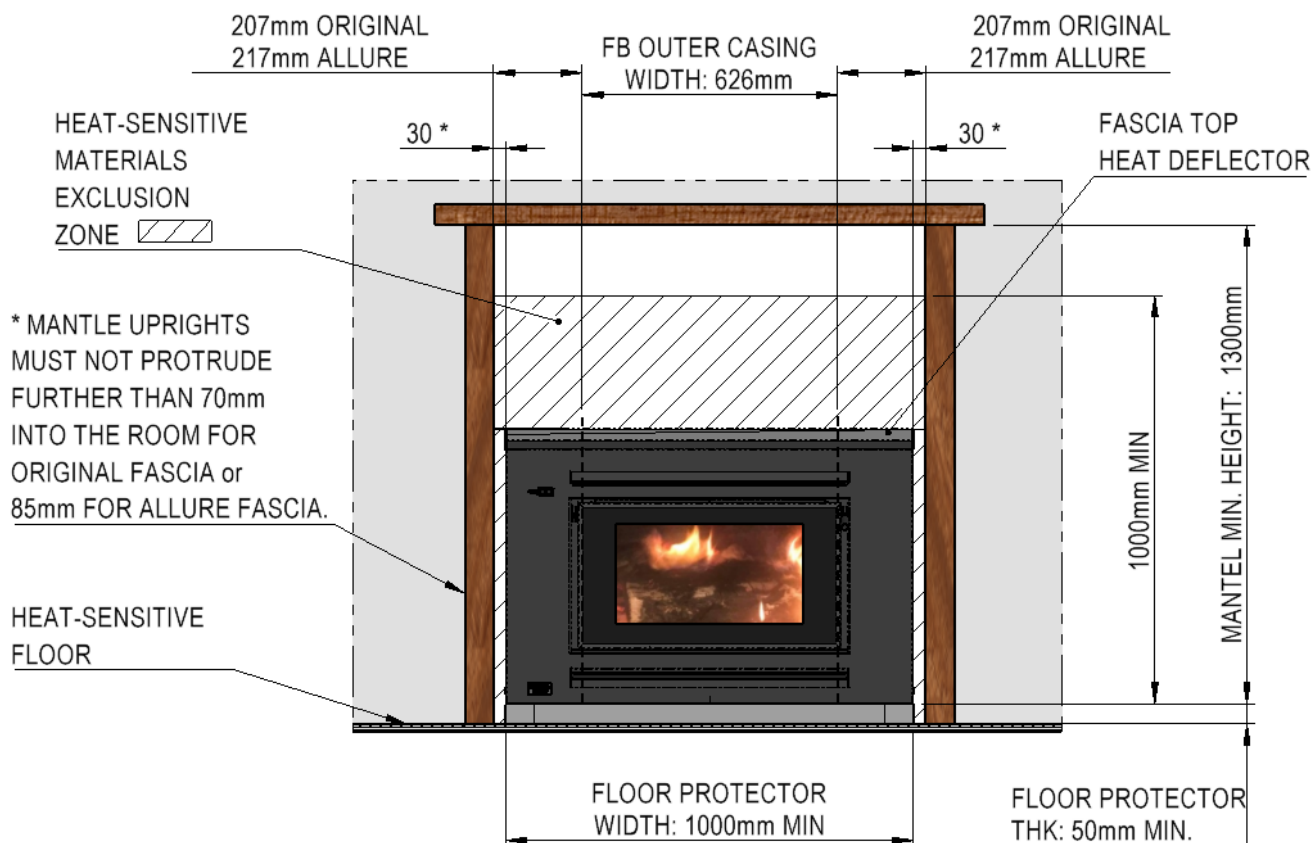


Fig 5

Notes: If a combustible mantel shelf is present, a 100mm heat deflector must be installed directly above the appliance fascia for the full width of the appliance.

* Mantel uprights must be no closer than 30mm to the fascia on the side of the appliance, and not protrude further than 70mm into the room, with the original fascia, or 85mm with the Allure fascia for units where fans are (internally) hard wired.

For units with external wiring using the included cutout on the side panel, the side clearances should be extended to a minimum of 50mm to allow for the cord.

➤ **THERMAL CLEARANCES CROSS SECTIONS**

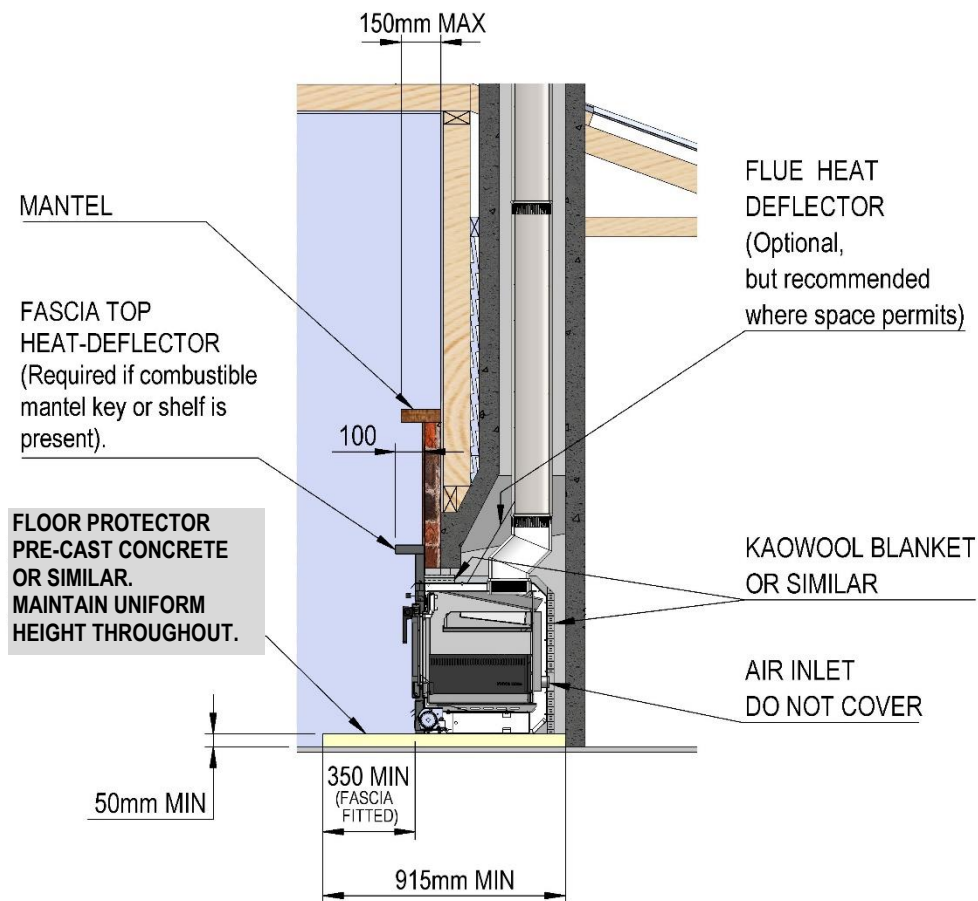


Fig. 6

N. Floor Protector Reductions

N1. The floor protector extension from the unit (Fig. 6) can be reduced if the unit is elevated. (Table 2) Measurements taken from the front of the fascia, which itself is 35mm thick for Original and 50mm thick for Allure version.

Floor Protector Reductions for Masonry Installations	Elevation Increase (mm)				
	0	50	100	150	200
Masonry	350	312	300	300	300

Table 2

O. Thermal Blanket Installation (Fig. 7)

- 01.** To ensure efficient operation it is recommended that thermal blanket (kaowool or similar – not supplied) is affixed on the top, sides, and back of outer casing.
- 02.** Ensure rear air inlet is not obscured in any way.
- 03.** Blanket should be fastened to the outer casing in such a way that secure, long-term fitment is assured. For example; using a high temperature multipurpose adhesive, or screws and panel washers.

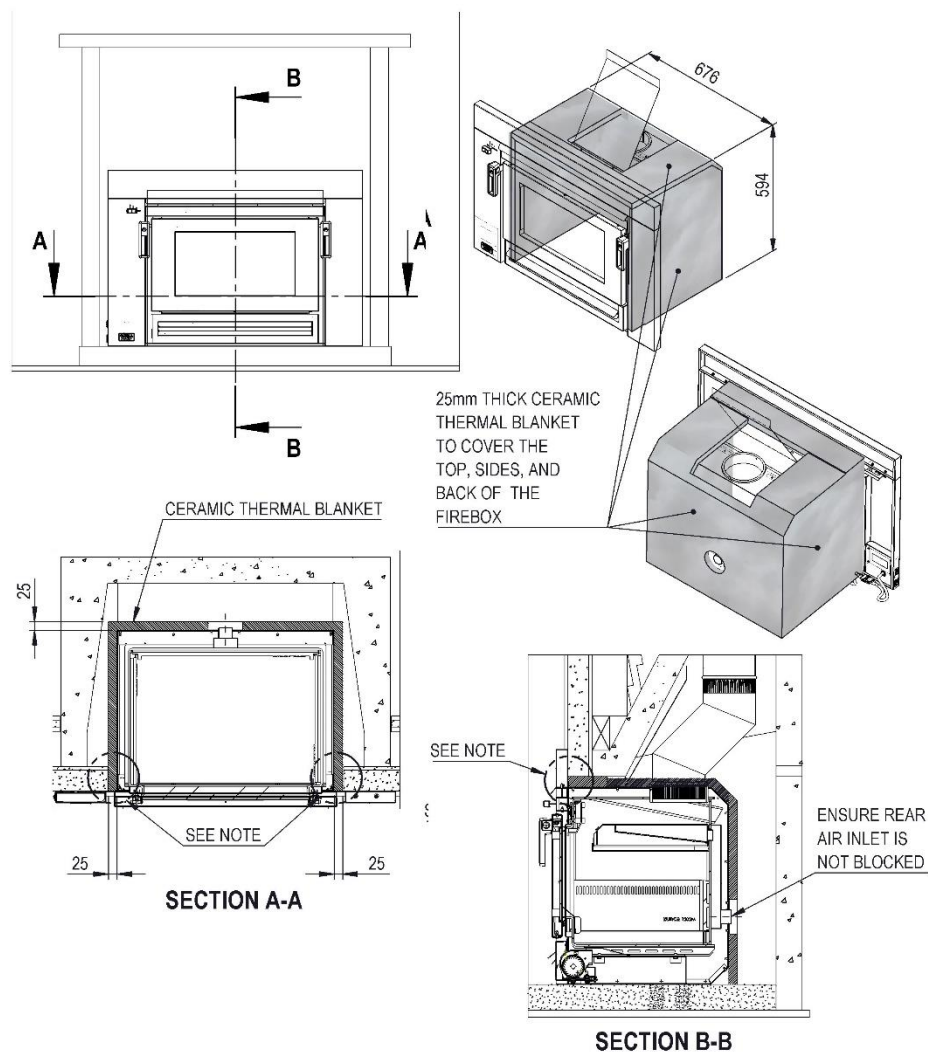


Fig. 7

⇒ **CAUTION**

Before installing the fascia, ensure the thermal blanket completely surrounds the top, sides, and back of the firebox (with the exception of the rear air intake), and that there will be no gaps between the thermal blanket and fascia when installed. Failure to do this will result in insufficient operation.

P. Xander Flue Spigot Fixing (Fig. 8)

- P1.** Remove the two self-tapping screws at the top outer corners of the firebox cowl and remove the Primary Outer Casing Top Panel and set it aside. (The panel is a slip fit under the panel at the rear of the flue spigot.)
- P2.** Apply fire cement sealant as required to the flue spigot and lower the Flue into the spigot on top of the firebox and ensure it is fully seated.
- P3.** Rivet or screw fasten the Flue Spigot, reinsert the Primary Outer Casing Top Panel, slipping the rear edge under the rear top panel and fasten with the two screws at the outer corners as below:

➤ Note: Access to affix the flue to the flue spigot is as follows:

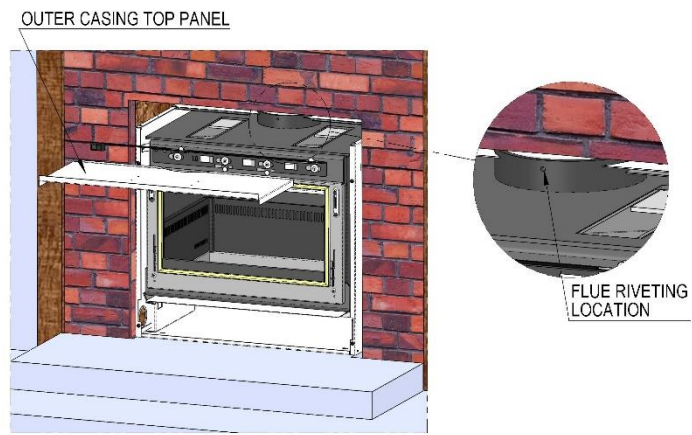


Fig. 8

- Note: Outer casing top panel must be installed after the flue is fixed in place.

Q. Xander Firebox Positioning

Q1. Ensure the firebox cowl is flush with the front wall cladding. (Fig. 9)



Fig. 9

R. Xander Insert Seismic Fixings

- Prior to installation, ensure the cavity floor is levelled. Also ensure the mantel face is perpendicular in relationship to the cavity floor.
- Ensure the unit is securely fixed using sleeve anchors or similar at the locations shown in the images on this page. (Fig. 10)

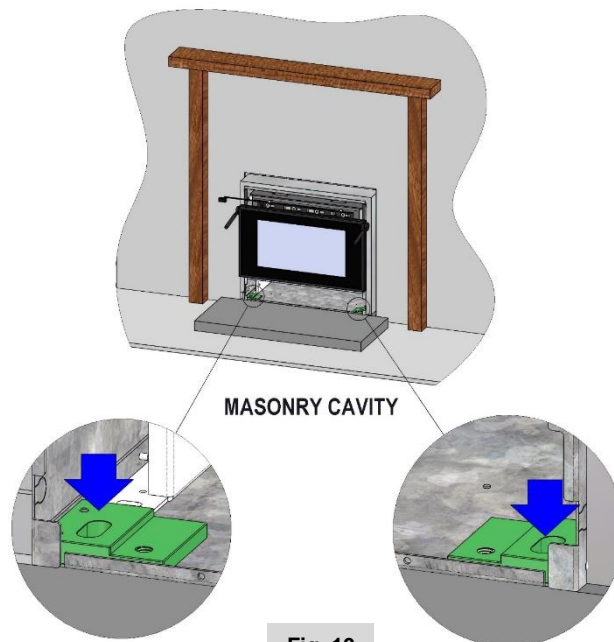


Fig. 10

S. Creating Cable Entry & Exit Point

⇒ **Note:** This section relates only to the ORIGINAL Fascia, as wiring for the “ALLURE” fascia is routed in a different way and does not need this.

WAYS TO CREATE A CABLE ENTRY AND EXIT POINT

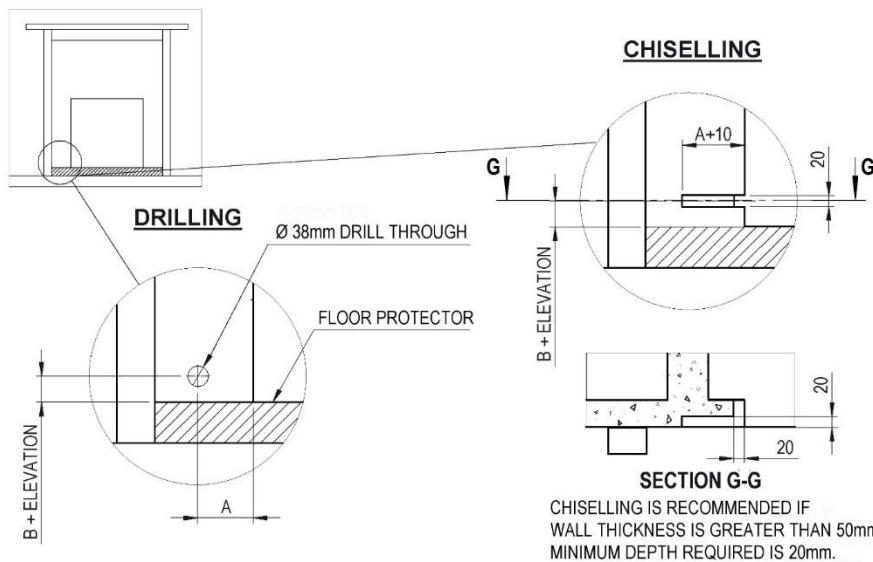


Fig. 11

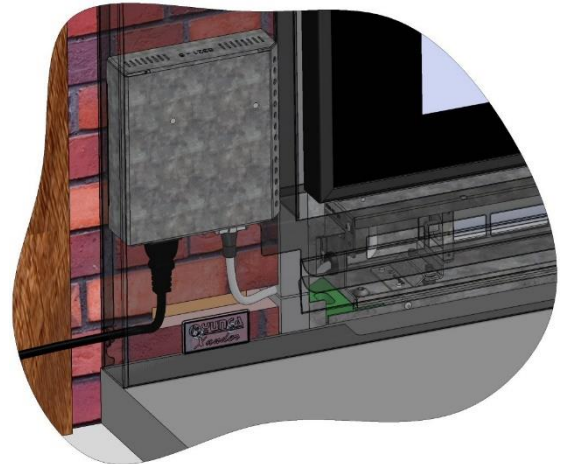


Fig. 12

INSTALLATION TYPE	FAN-SWITCH CABLE / POWER CORD ENTRY	
	A	B (TO BE ADDED TO ELEVATION)
MASONRY	103	48

T. Xander Fan – Electrical Supply

- T1. Remove the front fascia from its separate packaging box and set it aside in a safe position. You can use the box as a work surface to raise it up if you wish.
- T2. Although the fan is controlled automatically by a thermostat, an isolator switch must be installed in conjunction with the fire.

T3. 3-Pin Plug

If the fan is to be plugged into an electrical outlet in the room:

- a. Take the black Mains Power Cable (packaged with fascia) and plug it into the IEC C14 socket on the underside of the circuit box on the rear of the fascia.
- b. Pass the cable through the slot in the fascia.
- c. Crimp the cable grip bush (also in the plastic bag with the power cable) over the cable outside the fascia, and pull the bush and cable back into the hole in the fascia.

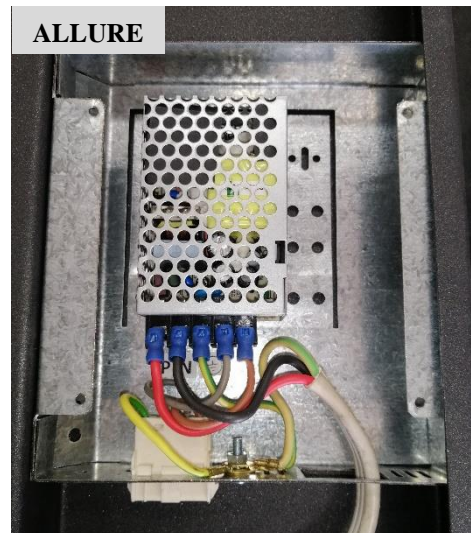
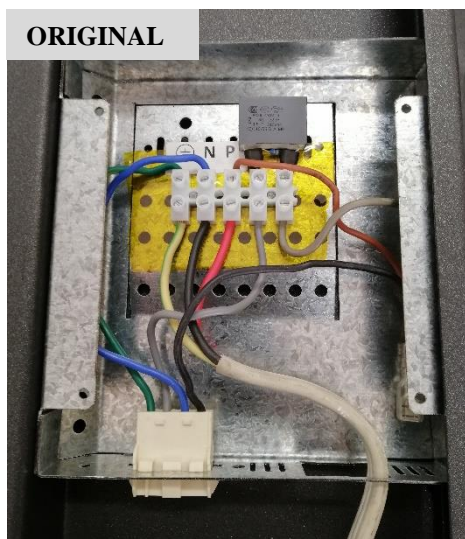
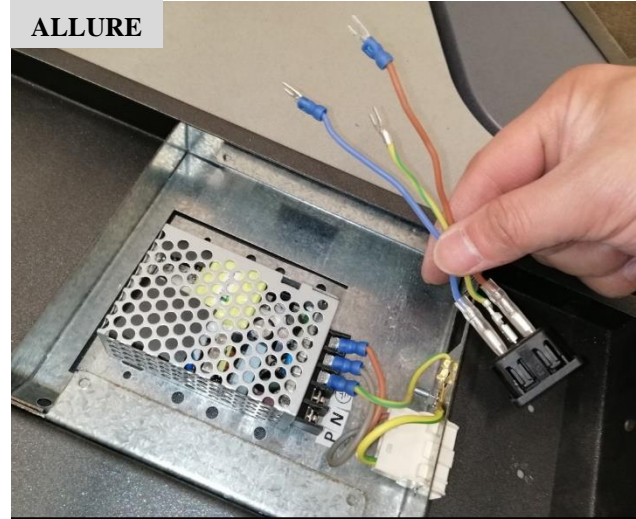


T4. Hardwired (Optional)

Should you wish to “hardwire” the fan unit, you can substitute the IEC C14 socket and wiring by using a TPS cable.

⇒ **You MUST be a Registered, Certified Electrical tradesperson to hardwire this appliance.**

- a. Remove the screw-fixed panel on the rear of the circuit box
- b. Completely remove the internal wiring and IEC C14 socket and substitute your TPS in place of the socket.
- c. Plug the slotted hole in the side of the fascia with the 16mm black, rubber grommet supplied in the plastic bag.



U. Xander Install Firebox and Fascia

- U1.** Position firebox in front of fireplace and remove any remaining packaging and desiccants from the flue and front of the air slide.



- U2.** Unlatch door, open it slightly, lift door off from firebox and set it aside in a safe position where it cannot fall down.



- U3.** The air slide lever is found in the plastic bag inside the carton containing the panel set (fascia). Attach as per below using the included fasteners. Note, the Allure fascia has its own air slide lever. If retrofitting a fireplace with the Allure Fascia set, the existing air slide lever must be replaced with the one supplied with the Allure fascia set.



U4. Slide the Air slide cover over the Air slide lever with the black side facing into the room.

(Photo to Come)

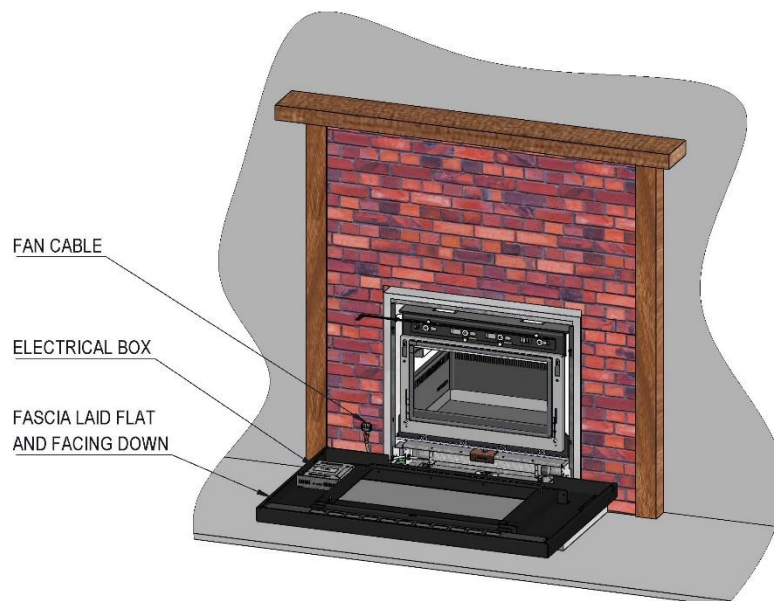
U5. Manoeuvre the firebox carefully into the previously prepared level cavity and securely fix. (Fig. 10)

U6. Insert the fan power cable grommet into the notch in the side cowl of the firebox and hang the cable outside the firebox ready to plug into the circuit box on the rear of the fascia.

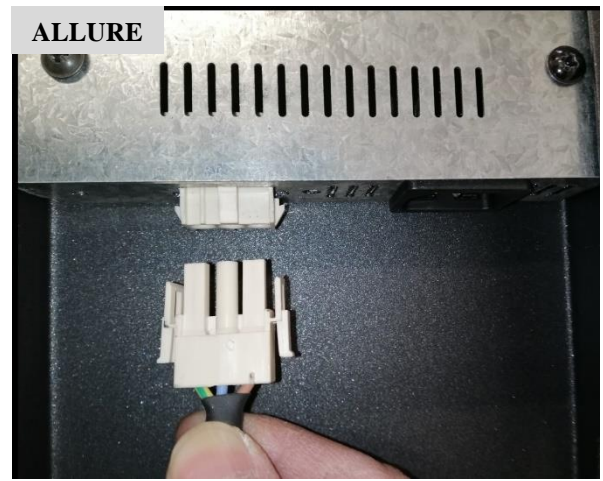


U7. Remove the four loosely fitted, black, mushroom washer, self-tapping screws from the front edges of the firebox cowl and set them aside where you can reach them.

U8. While ensuring you protect the painted finish, carefully lay the fascia (face-down) in front of the fire, ready to be lifted up into position.



U9. Reach over the top, or round the side and insert the fan power cable into the socket on the underside of the circuit box mounted on the rear of the fascia panel. (The plug is shaped so it will fit only one way round.)



U10. Lift the fascia panel, slide it over the air slide handle and sit it over the 2 pins which project out from the side cowls. (The pins take the weight of the fascia while the fastening screws are reinstalled and enable the fascia to easily be aligned during installation.)



U11. Reinstall the 4 screws, leveling the front fascia to align with the firebox (which you have previously leveled) and centralising it about the firebox, so there is an equal gap at the sides for the door to fit neatly into. Tighten the screws when you have everything aligned correctly.





ORIGINAL



ALLURE

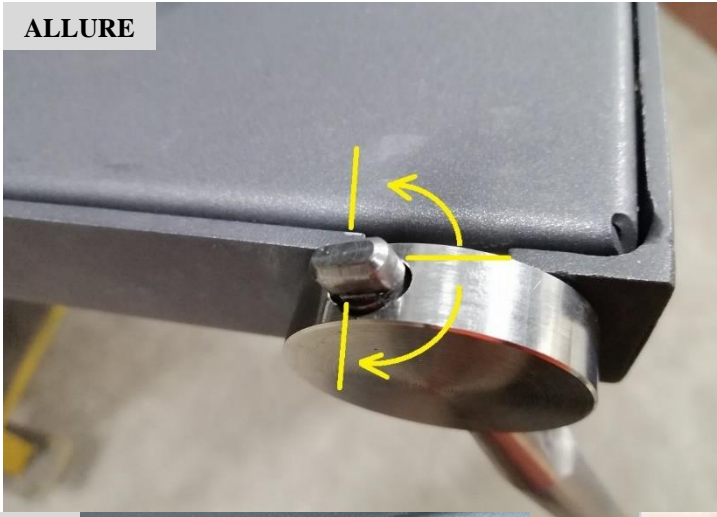
U12. Take the door, pry up the hook latches and insert the shaft of a screwdriver under the arms to make the hooks project.



U13. Reinstall the door via hinge slots in firebox. **Carefully remove screwdrivers while supporting door.** Confirm the fascia is positioned to provide equal spaces either side of the door and that the door is “square” with the fascia panel when closed and latched.

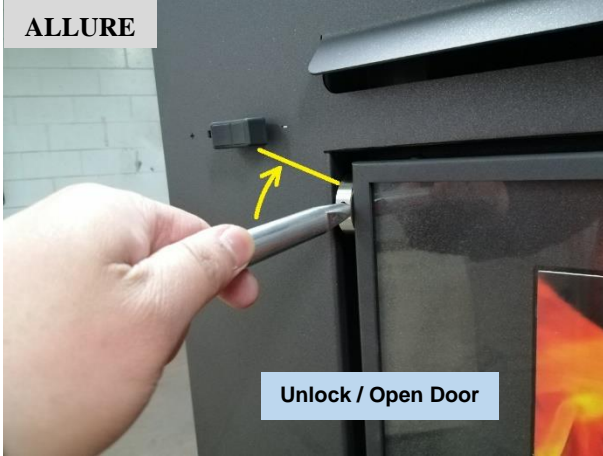


ALLURE



ALLURE:
 Insert and rotate the handle key 90 degrees clockwise (or counter-clockwise) to engage it into the disc.
Handle key should be removed during normal operation.

ALLURE



Unlock / Open Door

ALLURE



Lock / Close Door



ORIGINAL



ALLURE



ORIGINAL



ALLURE

U14. Install the air slide handle Knob. (From the plastic bag.)



U15. When you have finished and you're confident [tested] everything is electrically safe, plug the power cable in or if hard-wired, turn on the isolation switch to liven the unit prior to lighting a fire and conducting initial burns.

⇒ **WARNING**

When mounting the panel and fan assembly, any excess cabling (including the 4-pole connector) should be situated in the cavity outside of the firebox outer casing, and not in the high-temperature area under the firebox.

⇒ **WARNING**

It is important that the fire should NOT be operated without the fan powered up to be operational.

The fan has been factory tested to confirm that it starts when the temperature of the thermostat reaches 40 degrees Celsius.

Confirm that the fan starts and runs during your initial burns. The fan may take up to 1 hour to switch on.

- U16.** Ensure all electrical connections are secure and suitably tested to applicable requirements.

< END >

These instructions, spare parts information, operation and maintenance guides may be downloaded from <https://www.yunca.co.nz/installation-instructions>